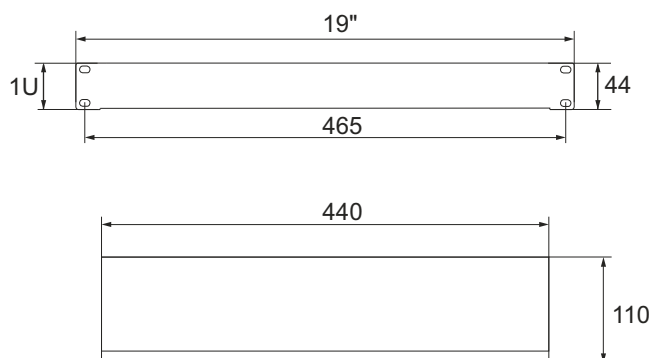
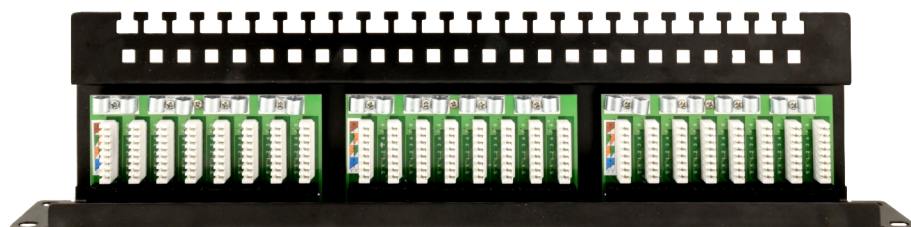


CODE: **RP-U24V5** v1.0/II  
NAME: **Patch Panel RP-U24V5 24 ports / UTP / Cat5e**

EN



## APPLICATION

Fundamental element of telecommunication networks. It is the final element of the structured network cabling. The model designed for Cat 5e UTP cables.

Patch Panel is fitted with 24 ports.

TECHNICAL DATA	
Patch panel type	24 ports / UTP / Cat5e
Mounting dimensions:	W=19", H=1U
External dimensions:	W=482 H=44 D=103 [mm, +/-2]
Net/gross weight:	1,05/1,15 [kg]
Finish:	- steel plate 1,2 mm, color black (RAL 9004)
Warranty:	2 years
Notes:	<ul style="list-style-type: none"> <li>- LSA connector strip, mounted horizontally – easy installation (punch down tool in vertical position)</li> <li>- Patch panel is fitted with mounting shelf allowing mounting and routing cables</li> <li>- additional metal cable clips for each twisted pair</li> <li>- descriptions and numbering of each RJ45 connector at the front panel</li> <li>- graphic indication of cable connectors (568A/B standard)</li> <li>- Four-point front mounting to RACK profiles</li> <li>- the set includes 4 M6 screws + cage nuts + cable ties</li> </ul>